

# Che si può fare

Da "Arie a una voce"  
di Barbara Strozzi  
Venezia 1664

Trascr. Angelina Figus

Canto

Liuto

Che si può fa - re?

Detailed description: This system contains the first six measures of the piece. The vocal line (Canto) is written on a single staff in a soprano clef, with a key signature of one flat and a common time signature. It begins with a whole rest for the first four measures, followed by a quarter note G4, a quarter note A4, a quarter note B4, and a half note C5. The lute accompaniment (Liuto) is written on two staves (treble and bass clefs). It features a complex harmonic texture with many accidentals and rests, typical of the Baroque lute style.

7

7

Che, che \_\_\_\_\_ che si può fa - re?

Detailed description: This system contains measures 7 through 12. The vocal line continues with a half note C5, followed by a quarter rest, a quarter note D5, a quarter note E5, and a half note F5. A slur covers the notes D5, E5, and F5. The lute accompaniment continues with similar complex textures. Measure numbers 7 are indicated at the start of both the vocal and lute staves.

13

13

Le stel - le ru - bel - le non han - no pie - tà, pie - tà \_\_\_\_\_ non

Detailed description: This system contains measures 13 through 18. The vocal line begins with a half note G4, followed by quarter notes A4, B4, C5, B4, A4, and a half note G4. The lute accompaniment continues with similar complex textures. Measure numbers 13 are indicated at the start of both the vocal and lute staves.

# Che si può fare

2  
19

han - no pie - tà. Che si può fa - re? Che, che \_\_\_\_\_

19

Detailed description: This system contains measures 19 through 24. The vocal line begins with a half note G4, followed by quarter notes A4, Bb4, and C5. There is a whole rest in measure 20, then quarter notes D5, C5, Bb4, and A4. Measure 21 has a whole rest, followed by quarter notes G4, F4, E4, and D4. Measure 22 has a whole rest, followed by quarter notes C4, Bb3, and A3. Measure 23 has a whole rest, followed by quarter notes G3, F3, and E3. Measure 24 has a whole rest, followed by quarter notes D3, C3, and Bb2. The piano accompaniment features a steady bass line of half notes in the left hand and chords in the right hand.

25

s'el cie - lo, s'el cie - lo non dà un in - flus - so di

25

Detailed description: This system contains measures 25 through 30. The vocal line starts with a whole rest in measure 25, then quarter notes G4, A4, Bb4, and C5. Measure 26 has quarter notes D5, C5, Bb4, and A4. Measure 27 has quarter notes G4, F4, E4, and D4. Measure 28 has quarter notes C4, Bb3, and A3. Measure 29 has quarter notes G3, F3, and E3. Measure 30 has quarter notes D3, C3, and Bb2. The piano accompaniment continues with a consistent harmonic support.

31

pa - ce un in - flus - so di pa - ce al mio pe - na -

31

Detailed description: This system contains measures 31 through 36. The vocal line begins with quarter notes G4, A4, Bb4, and C5. Measure 32 has quarter notes D5, C5, Bb4, and A4. Measure 33 has quarter notes G4, F4, E4, and D4. Measure 34 has quarter notes C4, Bb3, and A3. Measure 35 has quarter notes G3, F3, and E3. Measure 36 has quarter notes D3, C3, and Bb2. A long slur covers the vocal line from measure 31 to the end of the system. The piano accompaniment features a steady bass line and chords.

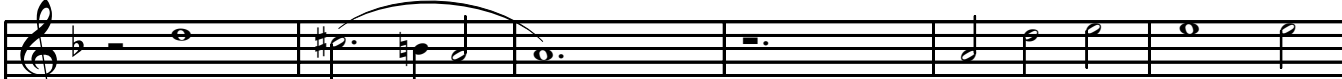
37

re. Che si può fa - re?

37

Detailed description: This system contains measures 37 through 42. The vocal line starts with a whole rest in measure 37, then quarter notes G4, A4, Bb4, and C5. Measure 38 has quarter notes D5, C5, Bb4, and A4. Measure 39 has quarter notes G4, F4, E4, and D4. Measure 40 has quarter notes C4, Bb3, and A3. Measure 41 has quarter notes G3, F3, and E3. Measure 42 has quarter notes D3, C3, and Bb2. A long slur covers the vocal line from measure 37 to the end of the system. The piano accompaniment continues with a consistent harmonic support.

43

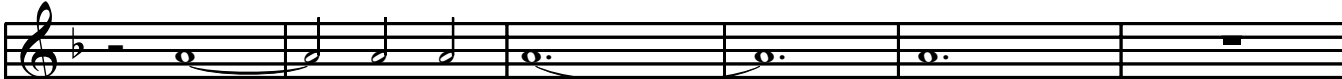


Che, che, \_\_\_\_\_ Che si può fa - re,

43



49



che \_\_\_\_\_ si può fa - - - - re?

49



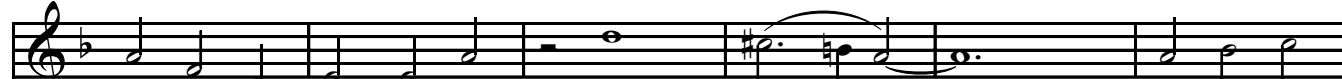
55



55



61



Che si può di - re? Che, che, che \_\_\_\_\_ che si può

61



# Che si può fare

4

67

di re? D'a - gl'a - stri\_ di - s'a - stri\_ mi\_ pio - - -

67

73

- va - no, mi pio -

73

79

- va - no\_ogn' hor. Che si può di - re? Che, che, che \_\_\_\_\_

79

85

- Se per - fi - do\_a - mor un re - spi - ro di - nie - ga\_un re-

85

91

spi - ro di - nie - ga al mio mar - ti - re al mio mar - ti - re un re-

97

spi - ro di - nie - ga al mio mar - ti - re. Che si può di - re? Che

103

Che, che che si può di - re?

109

109